

X Pol Panel Antenna 790-960MHz 33° 17.5dBi 0°-14° RET**Electrical Specifications**

Frequency Range (MHz):	790-960(R1)		
	790-862	862-894	894-960
Gain (dBi):	16.5±0.5	17.2±0.5	17.5±0.5
Return Loss (dB):	>14 (VSWR<1.5)		
Polarization:	±45°		
Horizontal 3dB beamwidth (°):	38	35	32
Vertical 3dB beamwidth (°):	16	14.5	13
Electrical Downtilt (°):	0°-14° Independently Continuously Adjustable		
RET Type:	Cascade SRET, AISG 2.0, Upgradeable		
1 st Upper Sidelobe Level (dB):	15	15	15
Front to Back Ratio @180±30°(dB):	23	24	25
Cross Polar Ratio 0° (dB):	15	15	15
Cross Polar Ratio ±15° (dB):	10	10	10
Isolation Port to Port (dB):	>28		
Max. Power Per Port (W)	250		
Intermodulation IM3 (dBc):	<-150 (2×43 dBm)		
Impedance (ohm):	50		
Lightning Protection:	DC Grounded		
Connector Type:	2×7/16 DIN Female		

BASTA Electrical Specifications

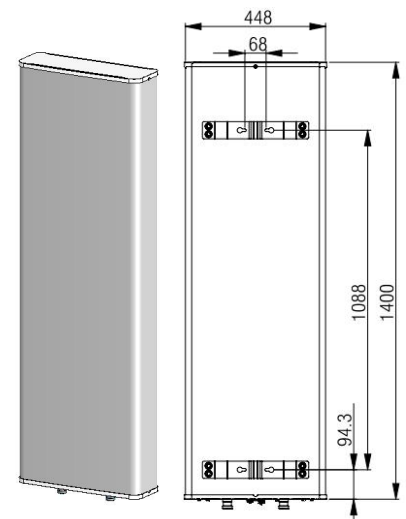
Frequency Range(MHz):	790-960(R1)		
	790-862	862-894	894-960
Average Gain by Beam Tilts (dBi):	0° 16.65	0° 16.94	0° 17.26
	7° 16.39	7° 16.54	7° 16.83
	14° 16.07	14° 16.21	14° 16.45
Gain by all Beam Tilts Tolerance(dB):	±0.35	±0.42	±0.53
Horizontal Beamwidth Tolerance(°):	±1.42	±1.61	±2.27
Vertical Beam width Tolerance(°):	±0.92	±0.48	±0.89
Upper Side Lobe Suppression, Peak to 20°(dB):	15.19	15.06	15.32
Front to back Total Power at 180° ± 30°(dB)	25.01	27.55	25.97
CPR at Boresight(dB):	17.54	21.10	15.78

Mechanical Data

Antenna Dimensions (mm) :	1400×448×145
Packing Dimensions (mm) :	1685×530×235
Antenna Net Weight /Bracket (kg) :	16.5/5.9
Antenna Gross Weight (kg) :	26.5
Radome Material:	Fiberglass
Pipe OD (mm):	55-114
Mounting Kits (Included):	BA.K.04.00069131, Adjustable Downtilt 0°-16°

Environmental Ratings

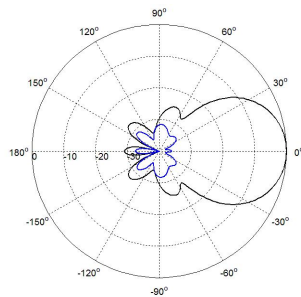
Humidity:	95%RH@+30°C
Temperature (°C):	-40~+70
Wind Load @150 km/h (N):	Frontal/ Lateral/ Rearside: 833/119/926
Max. wind velocity (km/h):	200



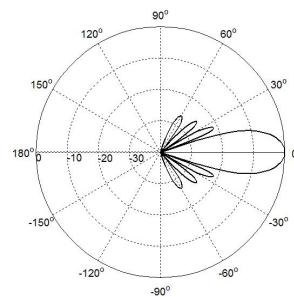
Internal RET Specifications

RET type:	Integrated RET
RET protocol:	AISG 2.0 /3 GPP
Input voltage range(V):	10-30 DC
Power consumption(W):	< 5 (motor activated , single RET) < 1 (standby, single RET), < 1.5 (standby, 12V)
Adjustment time (full range) (s):	< 120 (typically, depending on antenna type)
RET connector:	1 pair of AISG 8 pin male & female
Pin assignment according AISG:	8 pin circular connector conforming to IEC 60130-9 - Ed. 3.0
Lightning protection (kA):	5 (8/20 μ s Differential mode), 8 (8/20 μ s Common mode)

Typical Patterns

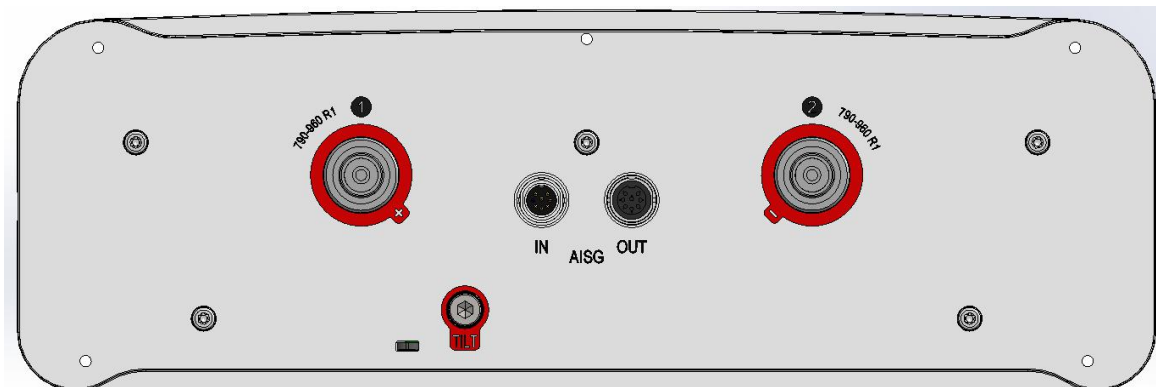


Azimuth



Elevation

Bottom View



Correlation Table

Frequency range	Array	Connector	RET S/N
790-960MHz	R1	1-2	BRxxx.....1R1

